

## Liva 3 seater sofa



## Liva

The LIVA is a sofa that stands out from the crowd. There are clear references to 50s style and a touch of "Gentleman's Club" with the characteristic wings, high back and striking lines. But LIVA is in a class of its own. It invites you to sit down and have a cosy chat - and there's even room to have a lie down.



**Charlotte Høncke**

### Design

**Fabric**  
Baize - Fabric

**Colour**  
Antracit

**Legs**  
Black lacquered birch

### Specification

**Depth**  
94 cm

**Seat height**  
44 cm

**Seat depth**  
60 cm

**Width**  
180 cm

**Back height**  
101 cm

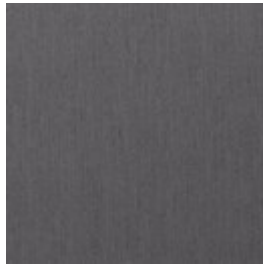
# Material and Colour

## **BAIZE - FABRIC**

Baize is an extra soft upholstery fabric that provides superior comfort. The material has a beautiful, classic look that suits most furniture.



Antracit



Dark Grey



Dust Blue



Dust Green



Grey



Light Grey



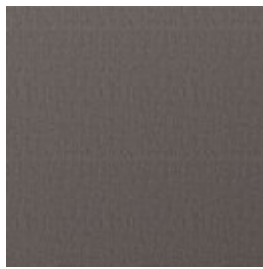
Sand

## **LONDON - FABRIC**

London is a strong upholstery fabric and comes in a variety of colors. It is a beautifully woven fabric with a pure and elegant look. London is 100% polyester.



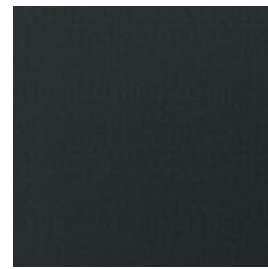
Blue



Brown



Burgundy



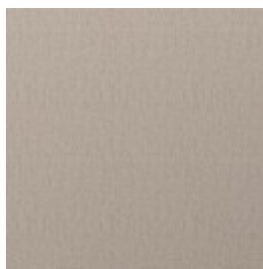
Dark Grey



Dust Green



Grey Brown



Light Beige



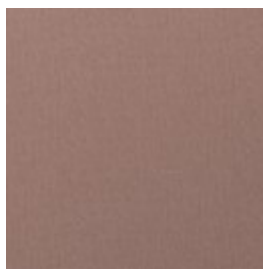
Light Grey



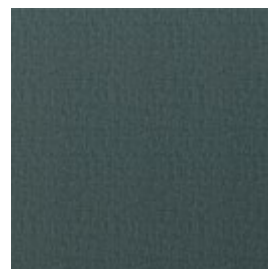
Mint



Multi Grey



Rosa



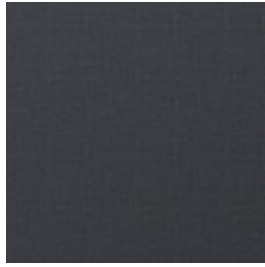
Sea green

# Material and Colour

**LINOSO - FABRIC** Linoso is woven from 100% polyester, making it very durable. The fabric features a natural look and a fine structure that is well-suited for most furniture.



Antracite



Blue Grey



Brown Melange



Charcoal



Dark Grey



Dust Blue



Grey Brown



Light Grey



Linen

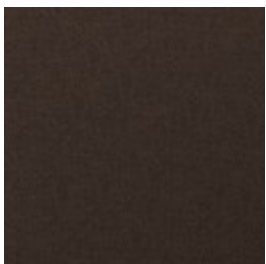


Mint

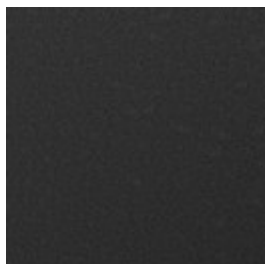


Terra

**QUAL - WOOL** Qual is woven from 100% pure new wool – specially developed for Bolia. The soft structure makes it comfortable and user-friendly. The wool's natural content of lanolin makes the fabric easy to keep clean.



Army Melange



Dark Grey Melange



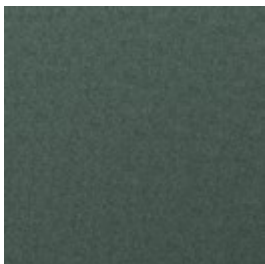
Grey Melange



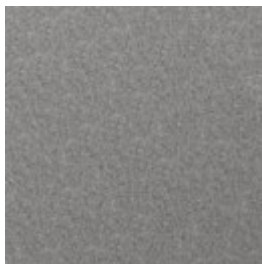
Light Grey Melange



Navy Melange



Sea green



Stone Grey

# Material and Colour

**MEMORY - FABRIC** - Memory is an upholstery toned with three colours that give the fabric a totally unique character. A durable and hard-wearing fabric with a beautiful and elegant structure that not only adds an exclusive look to any piece of furniture, but is also soft and comfortable to sit in.



Antracit



Blue



Grey



Grey/White



Light Brown



Light Grey

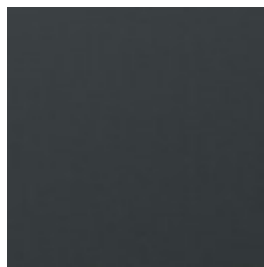
**RITZ - VELVET** - Ritz is a beautiful and velvety upholstery fabric. The velour fabric is exclusive in its appearance and its properties. Choose Ritz if you want a piece of furniture that stands out from the crowd.



Curry



Dark Blue



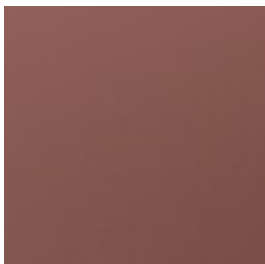
Forest Green



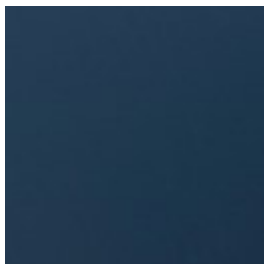
Grey



Light Grey



Light Rosa



Petrol



Steel Grey

## Material and Colour

**LAINÉ -  
WOOL**

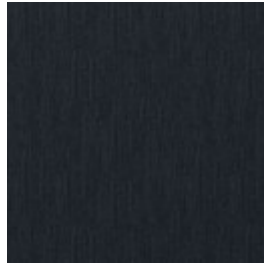
Laine is a very exclusive wool fabric consisting of 92% pure New Zealand wool and 8% polyamide. The elegant melange effect gives the fabric has a wonderfully vibrant look. Furthermore, it is Oeko-Tex certified and EU Eco-labelled.



Antracit



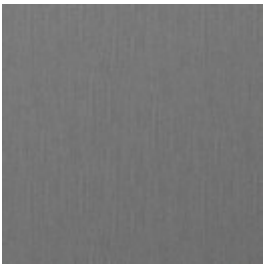
Beige



Dark Blue



Dark Grey



Grey



Light Blue



Light Brown

**We are here to help**

A dedicated phone number and e-mail address is available for you and your product inquiries:

Email: [lineone-en@steelcase.com](mailto:lineone-en@steelcase.com)

Phone: +800 2000 4000