

C3 Armchair



C3

With the C3 chair, Glismand and Rdiger have created fantastic comfort from the best materials. With its soft upholstery, massive wooden legs and detailed design, the chair achieves a totally classic Scandinavian look. Lean back and enjoy it.



Glismand & Rüdiger

Design

Fabric
Baize - Fabric

Colour
Dust Blue

Legs
Smoked oak

Specification

Depth
70 cm

Width
70 cm

Height
74 cm

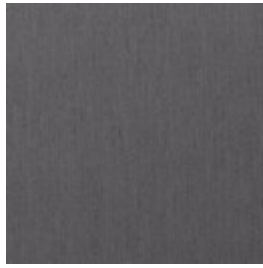
Material and Colour

BAIZE - FABRIC

Baize is an extra soft upholstery fabric that provides superior comfort. The material has a beautiful, classic look that suits most furniture.



Antracit



Dark Grey



Dust Blue



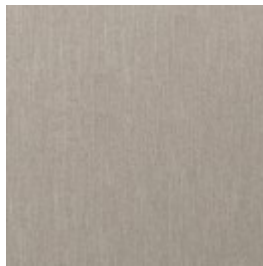
Dust Green



Grey



Light Grey



Sand

LONDON - FABRIC

London is a strong upholstery fabric and comes in a variety of colors. It is a beautifully woven fabric with a pure and elegant look. London is 100% polyester.



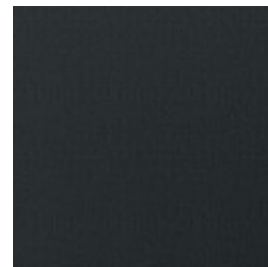
Blue



Brown



Burgundy



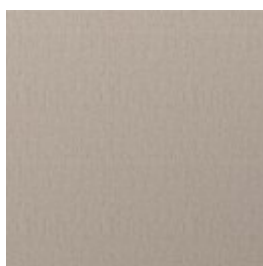
Dark Grey



Dust Green



Grey Brown



Light Beige



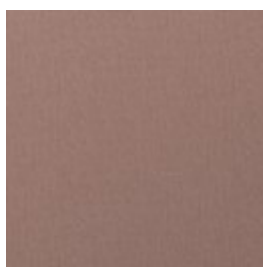
Light Grey



Mint



Multi Grey



Rosa



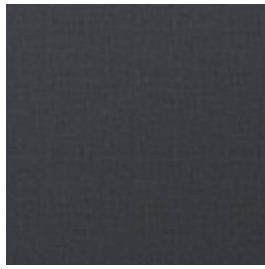
Sea green

Material and Colour

LINOSO - FABRIC Linoso is woven from 100% polyester, making it very durable. The fabric features a natural look and a fine structure that is well-suited for most furniture.



Antracite



Blue Grey



Brown melange



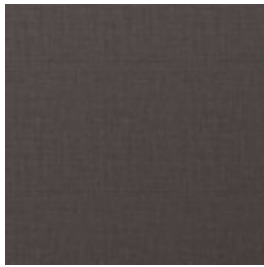
Charcoal



Dark Grey



Dust Blue



Grey Brown



Light Grey



Linen



Mint

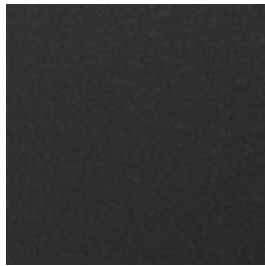


Terra

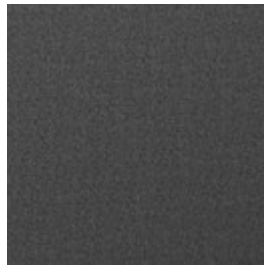
QUAL - WOOL Qual is woven from 100% pure new wool – specially developed for Bolia. The soft structure makes it comfortable and user-friendly. The wool's natural content of lanolin makes the fabric easy to keep clean.



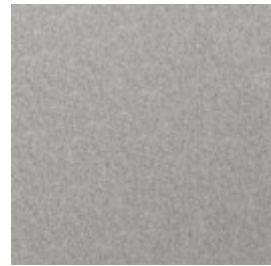
Army Melange



Dark Grey Melange



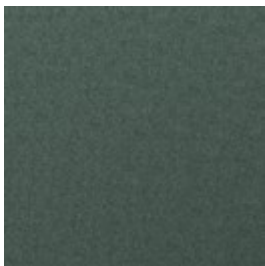
Grey Melange



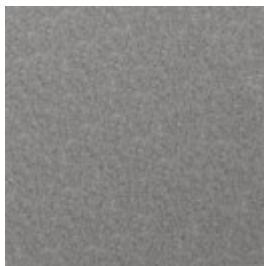
Light Grey Melange



Navy Melange



Sea green



Stone Grey

Material and Colour

MEMORY - FABRIC - Memory is an upholstery toned with three colours that give the fabric a totally unique character. A durable and hard-wearing fabric with a beautiful and elegant structure that not only adds an exclusive look to any piece of furniture, but is also soft and comfortable to sit in.



Antracit



Blue



Grey



Grey/White



Light Brown

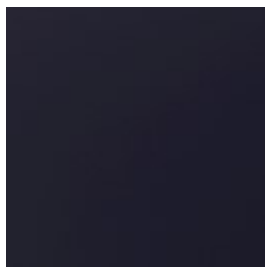


Light Grey

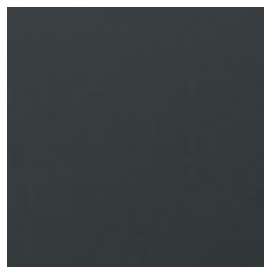
RITZ - VELVET - Ritz is a beautiful and velvety upholstery fabric. The velour fabric is exclusive in its appearance and its properties. Choose Ritz if you want a piece of furniture that stands out from the crowd.



Curry



Dark Blue



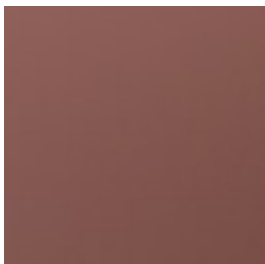
Forest Green



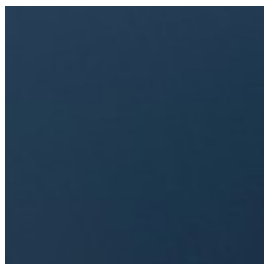
Grey



Light Grey



Light Rosa



Petrol



Steel Grey

Material and Colour

LAINÉ - WOOL

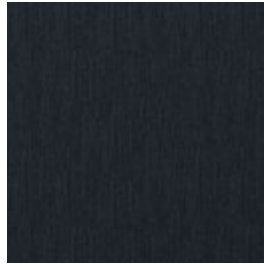
Laine is a very exclusive wool fabric consisting of 92% pure New Zealand wool and 8% polyamide. The elegant melange effect gives the fabric a wonderfully vibrant look. Furthermore, it is Oeko-Tex certified and EU Eco-labelled.



Antracit



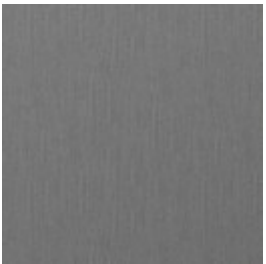
Beige



Dark Blue



Dark Grey



Grey



Light Blue



Light Brown

QUATTRO

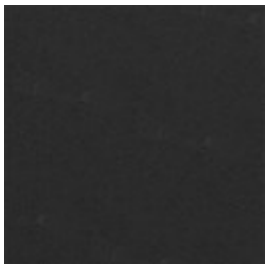
Luxuriously thick European chrome-free traceable leather with a light surface finish. Quattro

TRACEABLE

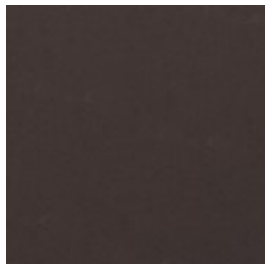
Traceable will develop a natural patina over time, which creates a more raw, characterful

- LEATHER

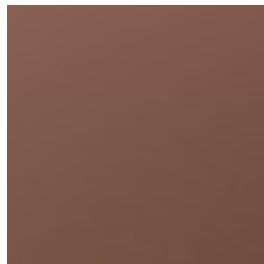
appearance.



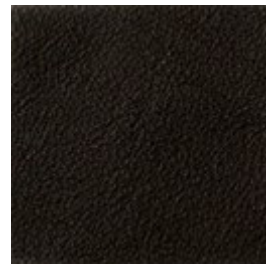
Black



Brown



Cognac



Dark Brown

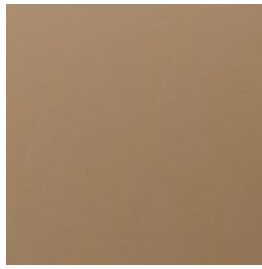
Material and Colour



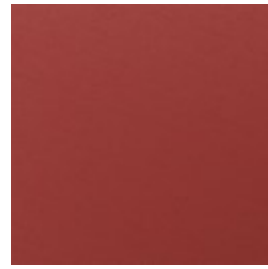
Grey



Ice



Nougat



Red



White

Choose Legs



Oiled Oak



Oiled Walnut



Smoked oak



White oiled oak

We are here to help

A dedicated phone number and e-mail address is available for you and your product inquiries:

Email: lineone-en@steelcase.com

Phone: +800 2000 4000