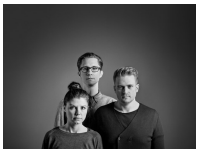


## Philippa Armchair



## Philippa armchair

'Philippa' combines a very Nordic and modern look, yet retains references to 1950s and 1960s classic armchairs. The chair is created by the design group Busetti Garuti Redaelli, designed with softness, comfort and an organic shape in mind.



**Busetti Garuti Redaelli**

### Design

**Fabric**  
Fabric Baize

**Colour**  
Grey

**Legs**  
White oiled oak

### Specification

**Depth**  
82 cm

**Seat height**  
37 cm

**Seat depth**  
51 cm

**Width**  
83 cm

**Back height**  
72 cm

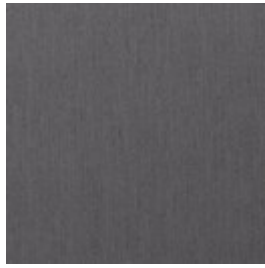
# Material and Colour

## **BAIZE - FABRIC**

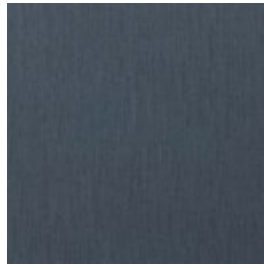
Baize is an extra soft upholstery fabric that provides superior comfort. The material has a beautiful, classic look that suits most furniture.



Antracit



Dark Grey



Dust Blue



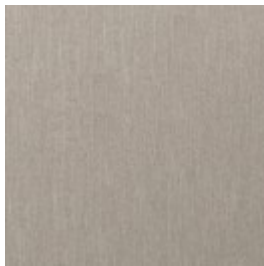
Dust Green



Grey



Light Grey



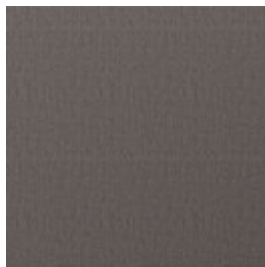
Sand

## **LONDON - FABRIC**

London is a strong upholstery fabric and comes in a variety of colors. It is a beautifully woven fabric with a pure and elegant look. London is 100% polyester.



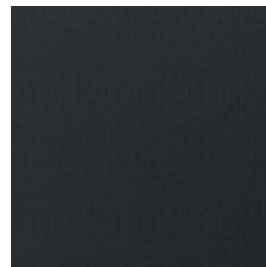
Blue



Brown



Burgundy



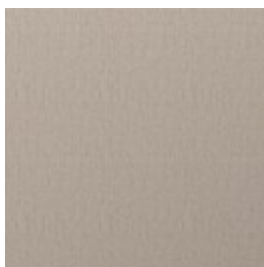
Dark Grey



Dust Green



Grey Brown



Light Beige



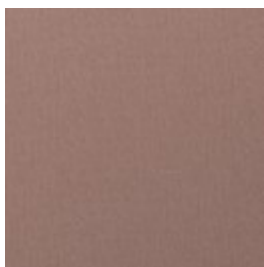
Light Grey



Mint



Multi Grey



Rosa



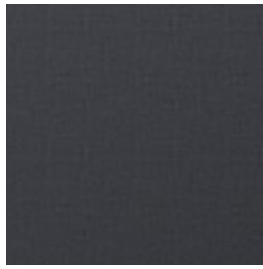
Sea green

# Material and Colour

**LINOSO - FABRIC** Linoso is woven from 100% polyester, making it very durable. The fabric features a natural look and a fine structure that is well-suited for most furniture.



Antracit



Blue Grey



Brown Melange



Charcoal



Dark Grey



Dust Blue



Grey Brown



Light Grey



Linen

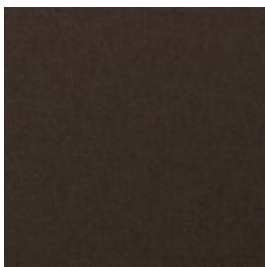


Mint

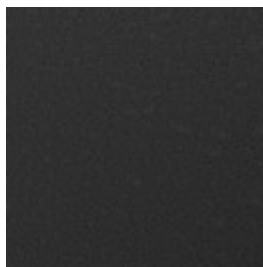


Terra

**QUAL - WOOL** Qual is woven from 100% pure new wool – specially developed for Bolia. The soft structure makes it comfortable and user-friendly. The wool's natural content of lanolin makes the fabric easy to keep clean.



Army Melange



Dark Grey Melange



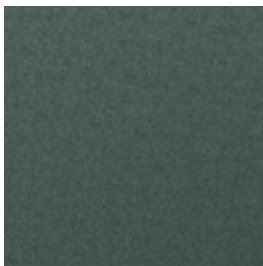
Grey Melange



Light Grey Melange



Navy Melange



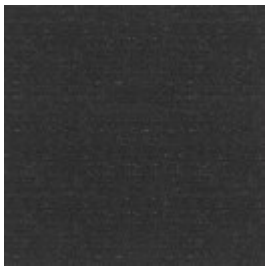
Sea green



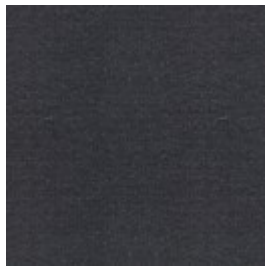
Stone Grey

# Material and Colour

**MEMORY - FABRIC** - Memory is an upholstery toned with three colours that give the fabric a totally unique character. A durable and hard-wearing fabric with a beautiful and elegant structure that not only adds an exclusive look to any piece of furniture, but is also soft and comfortable to sit in.



Antracit



Blue



Grey



Grey/White



Light Brown

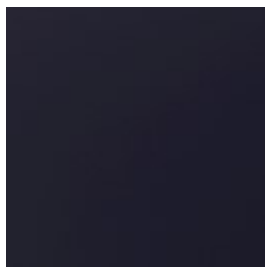


Light Grey

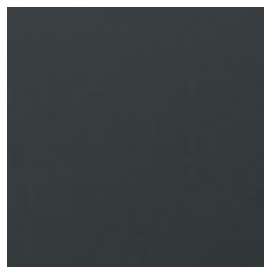
**RITZ - VELVET** - Ritz is a beautiful and velvety upholstery fabric. The velour fabric is exclusive in its appearance and its properties. Choose Ritz if you want a piece of furniture that stands out from the crowd.



Curry



Dark Blue



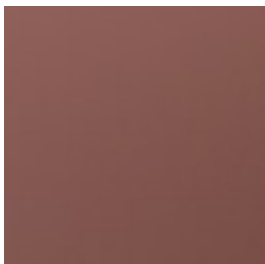
Forest Green



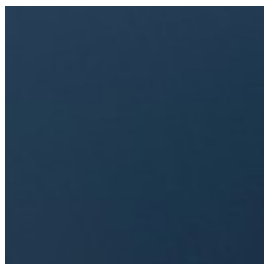
Grey



Light Grey



Light Rosa



Petrol



Steel Grey

# Material and Colour

## LAINÉ - WOOL

Laine is a very exclusive wool fabric consisting of 92% pure New Zealand wool and 8% polyamide. The elegant melange effect gives the fabric a wonderfully vibrant look. Furthermore, it is Oeko-Tex certified and EU Eco-labelled.



Antracit



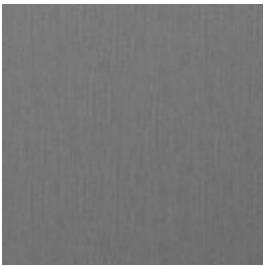
Beige



Dark Blue



Dark Grey



Grey



Light Blue



Light Brown

## QUATTRO

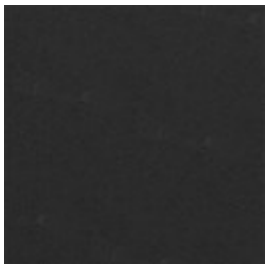
Luxuriously thick European chrome-free traceable leather with a light surface finish. Quattro

## TRACEABLE

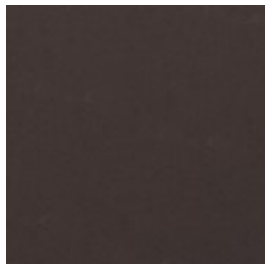
Traceable will develop a natural patina over time, which creates a more raw, characterful

## - LEATHER

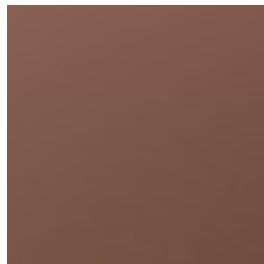
appearance.



Black



Brown



Cognac



Dark Brown

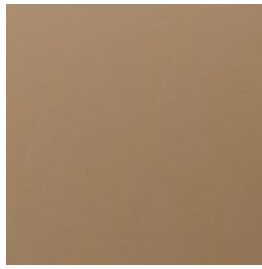
## Material and Colour



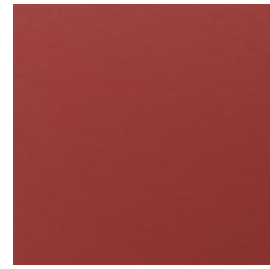
Grey



Ice



Nougat



Red



White

## Choose Legs



Oiled oak



Smoked Oak



Walnut



White oiled oak

## We are here to help

A dedicated phone number and e-mail address is available for you and your product inquiries:

Email: [lineone-en@steelcase.com](mailto:lineone-en@steelcase.com)

Phone: +800 2000 4000